



App #1

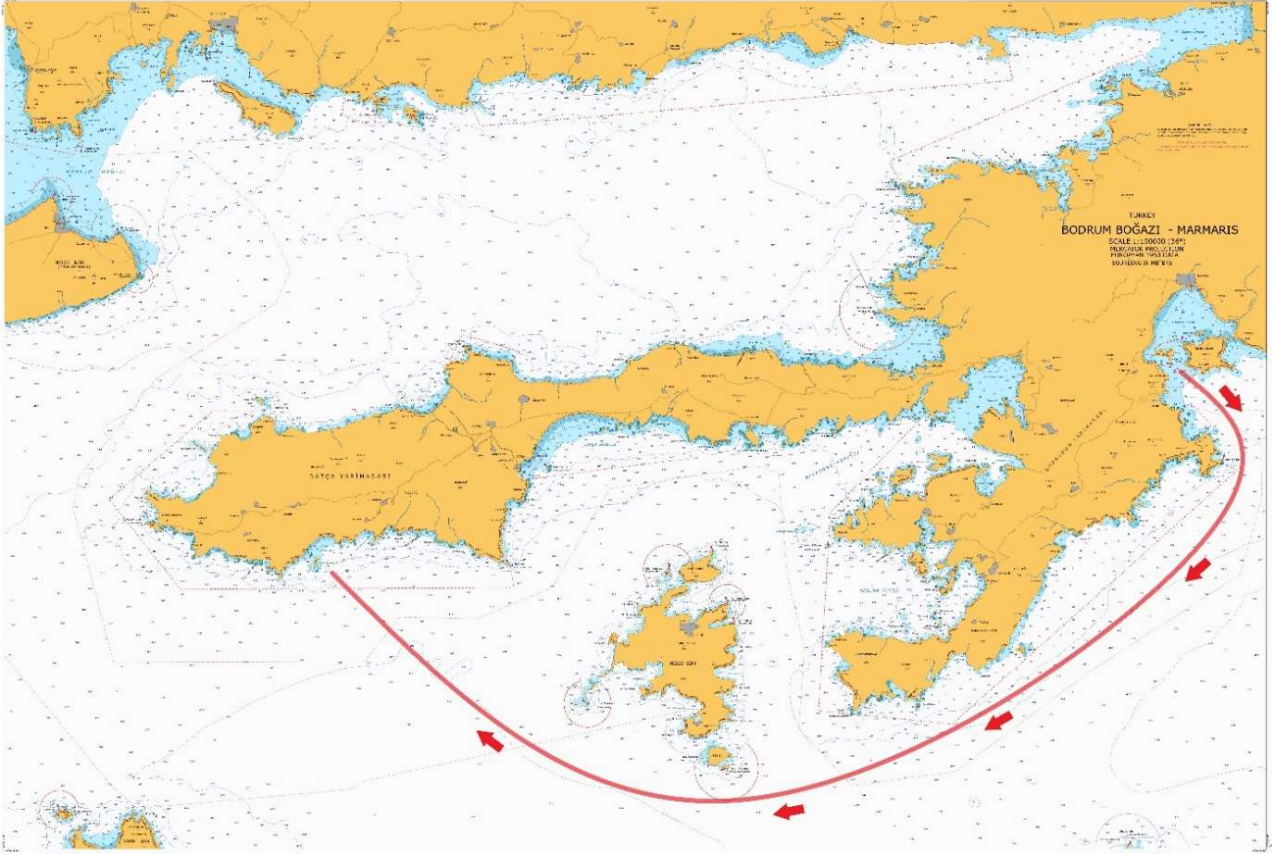
Race Courses



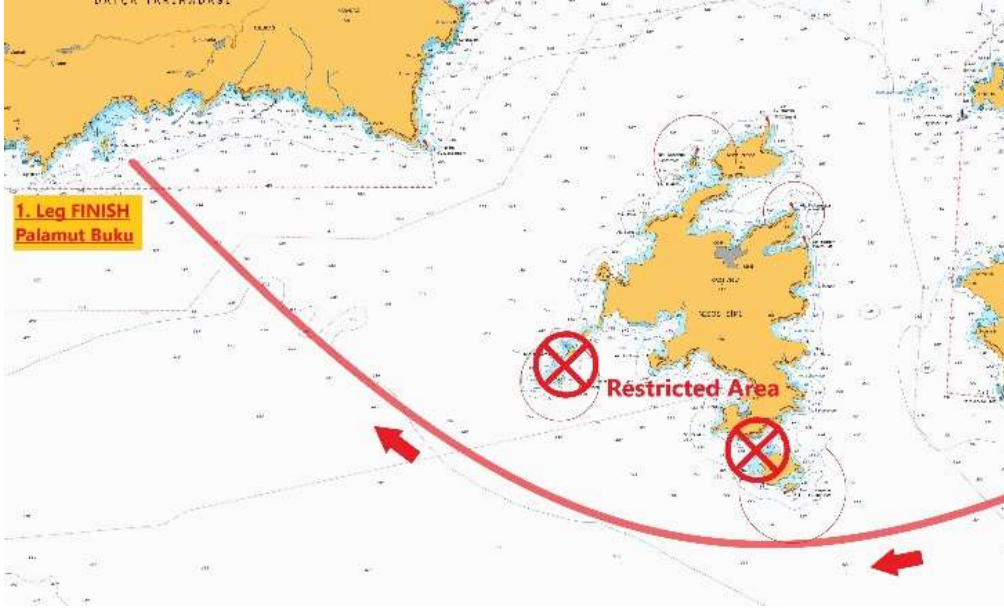
#LEG 1



MARMARIS TO PALAMUTBUKU



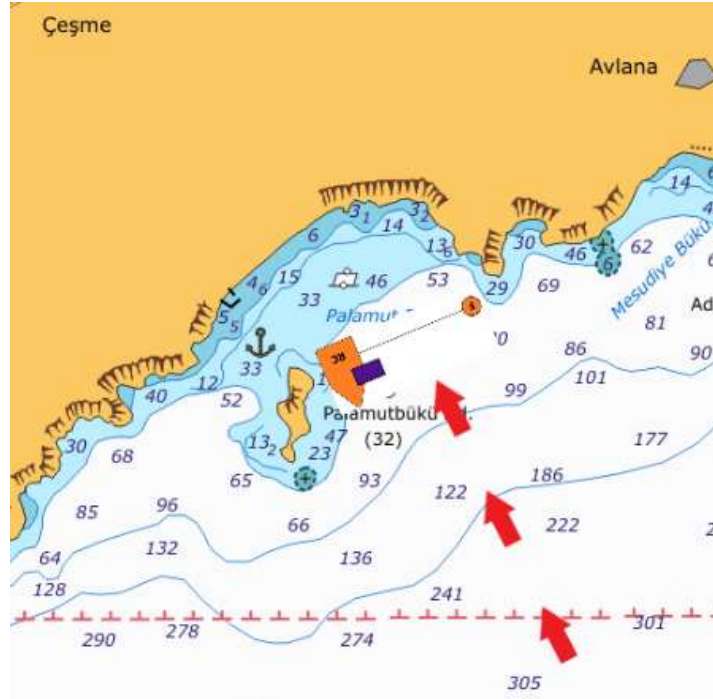
**START (MARMARIS BAY) – KIZIL ADA TO STARBOARD – CATAL ADA
TO STARBOARD – SYMI ISLAND TO STARBOARD –
KOULUNTROS&SESKLI ISLANDS TO STARBOARD (restricted area) –
FINISH (PALAMUT BUKU ISLAND)**



PALAMUTBUKU FINISH

FINISH VESSEL COORDINATES WILL BE

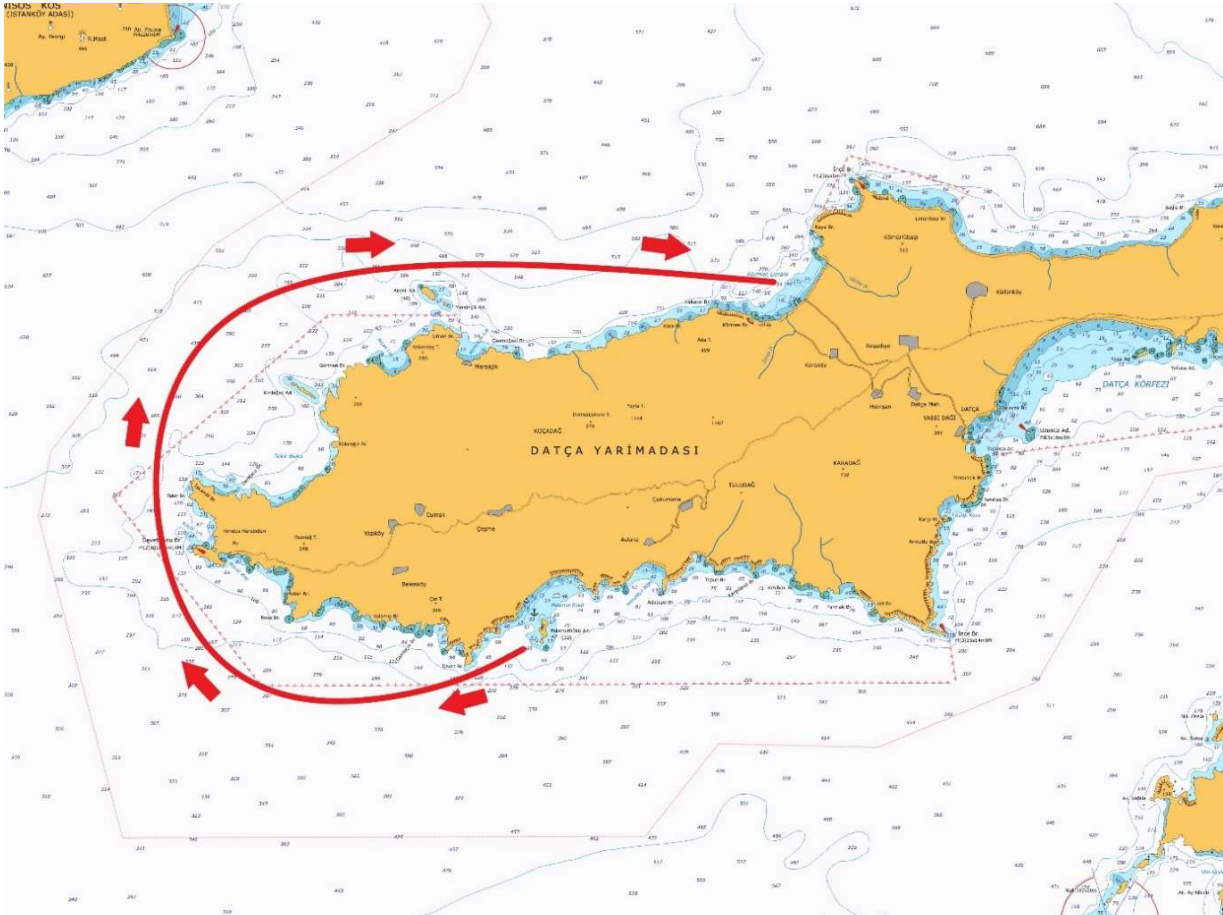
36°39.735'N 27°30.778'E



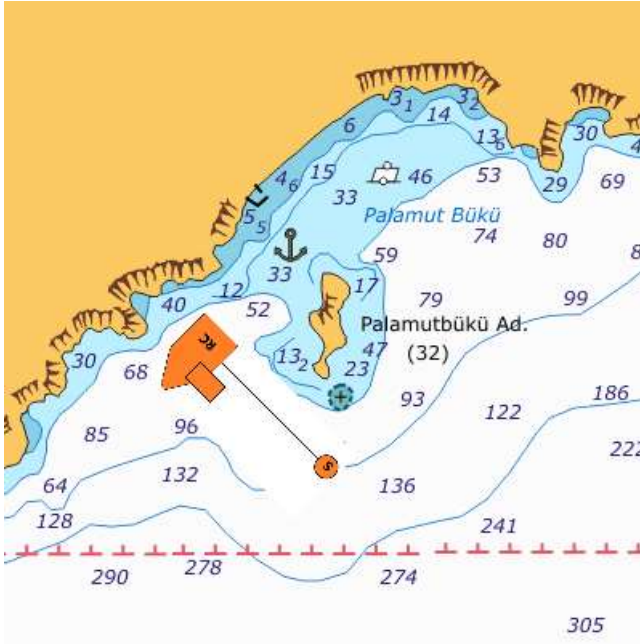
#2. LEG



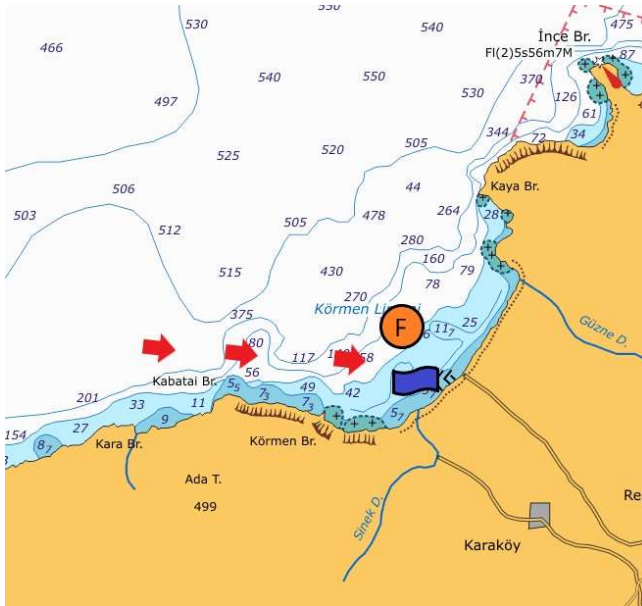
PALAMUTBUKU TO KORMEN



START (PALAMUTBUKU ISLAND) – KIZILAGAC ADASI TO STARBOARD
– AKCALI ADASI TO STARBOARD – FINISH (KORMEN BAY)



PALAMUTBUKU START

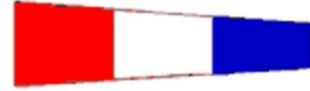


KORMEN FINISH

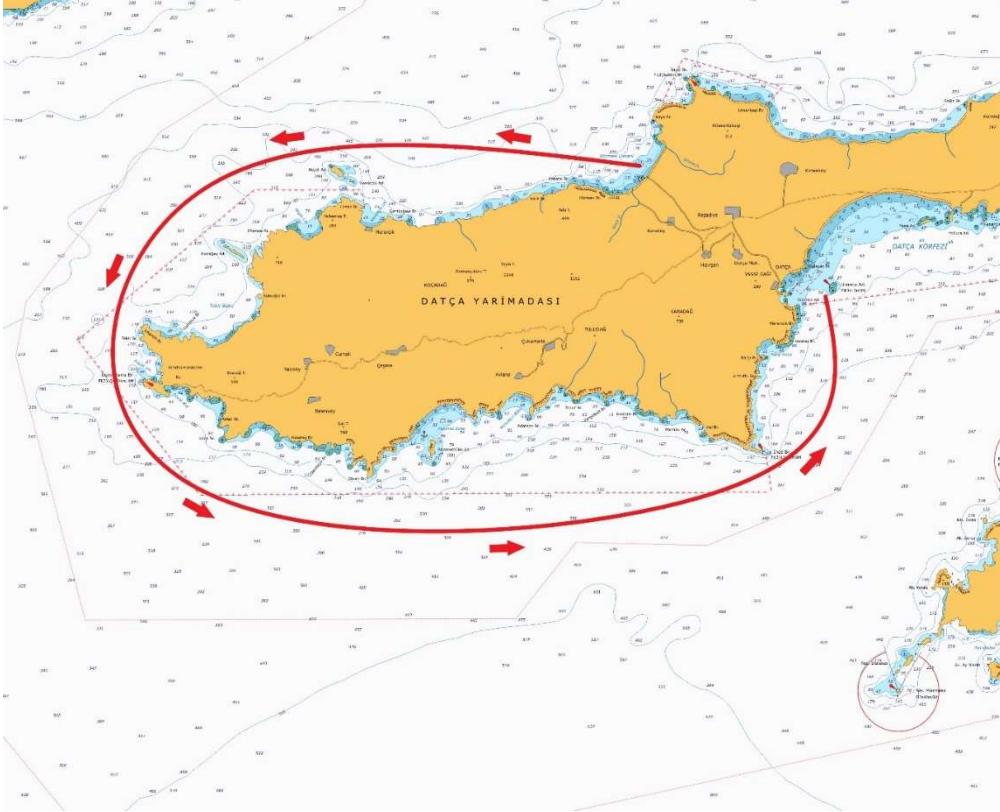
THE FINISH LINE WILL BE BETWEEN
THE BLUE FINISH FLAG ON THE
PEER AND ORANGE BOUY ON PORT
(MARKED ON THE MAP)

Only this route, the blue flag will remain on the starboard side of the course direction at the finish line . Therefore, it can not be a reason for redress or protest.

#3. LEG

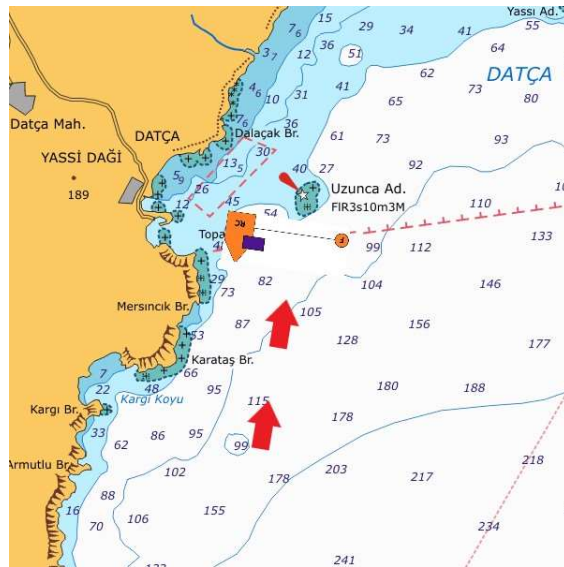


KORMEN TO DATÇA



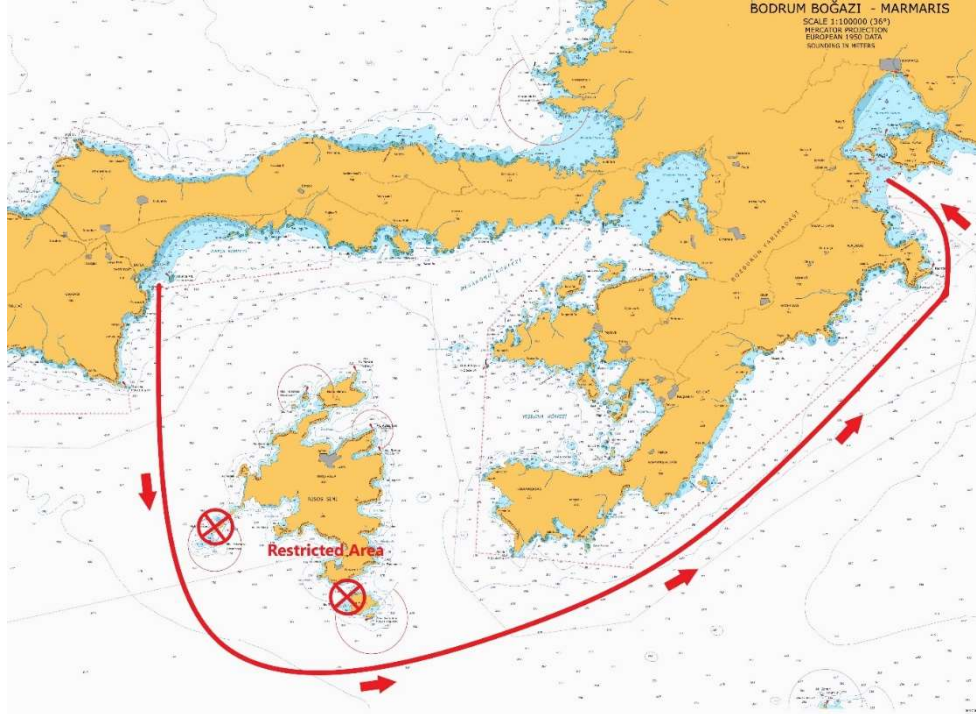
START (KORMEN BAY) – AKCALI ADASI TO PORT – KIZILAGAC ADASI TO PORT – PALAMUTBUKU ADASI TO PORT – FINISH (UZUNCA ADA

DATÇA FINISH



#4. LEG

DATCA TO MARMARIS



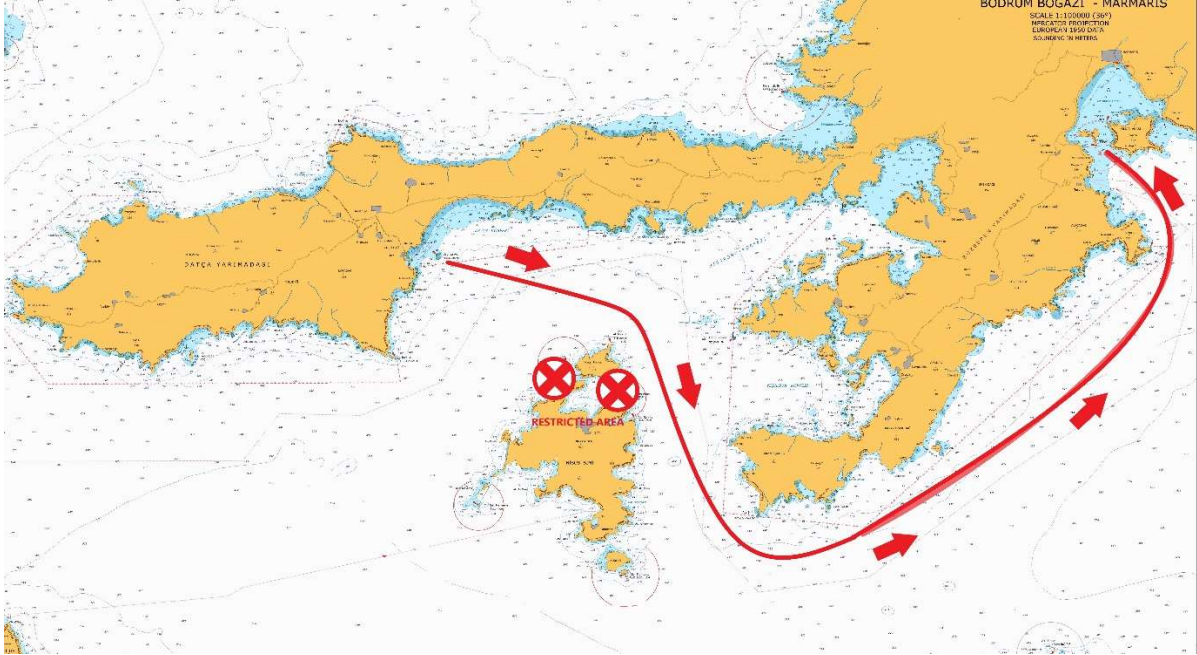
START (DATCA BAY) SYMI ISLAND TO PORT– KOULUNTROS&SESKLI ISLANDS TO PORT (restricted area) CATAL ADA TO PORT – KIZIL ADA TO PORT – FINISH (MARMARIS BAY)

MARMARIS FINISH



ALTERNATIVE COURSE FOR #4. LEG (4-E)

DATCA TO MARMARIS

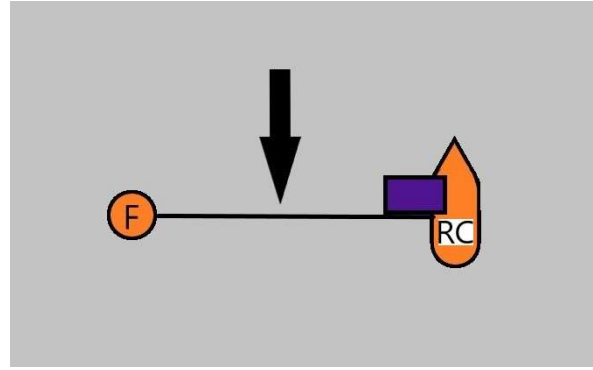
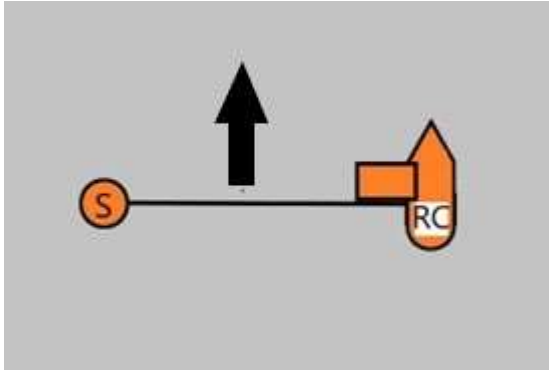


START (DATCA BAY)- SYMI ISLAND AND NIMOS ISLANDS TO STARBOARD (restricted area) CATAL ADA TO PORT – KIZIL ADA TO PORT – FINISH (MARMARIS BAY)

MARMARIS FINISH



START/FINISH



IF THERE IS A BUOY UP WIND:

IF GREEN FLAG IS RAISED

OFFSET BUOY HAVE TO BE ON YOUR STARBOARD

IF RED FLAG IS RAISED

OFFSET BUOY HAVE TO BE ON YOUR PORT

DISTANCES AND TIME LIMITS

| DAY | START | STARTING TIME | FINISH | DISTANCE (NM) | TIME LIMIT (HOUR) |
|-----|--------------------|---------------|--------------------|---------------|-------------------|
| 1 | MARMARIS BAY | 13:00 | PALAMUTBUKU ISLAND | 60 NM | 17 |
| 2 | LAY DAY | | | | |
| 3 | PALAMUTBUKU ISLAND | 13:00 | KORMEN BAY | 25 NM | 8 |
| 4 | KORMEN BAY | 13:00 | UZUNCA ISLAND | 40 NM | 12 |
| 5 | DATCA BAY | 13:00 | MARMARIS BAY | 50 NM | 15 |

THE ABOVE DISTANCES ARE APPROXIMATELY